

Applied Behavior Analysis

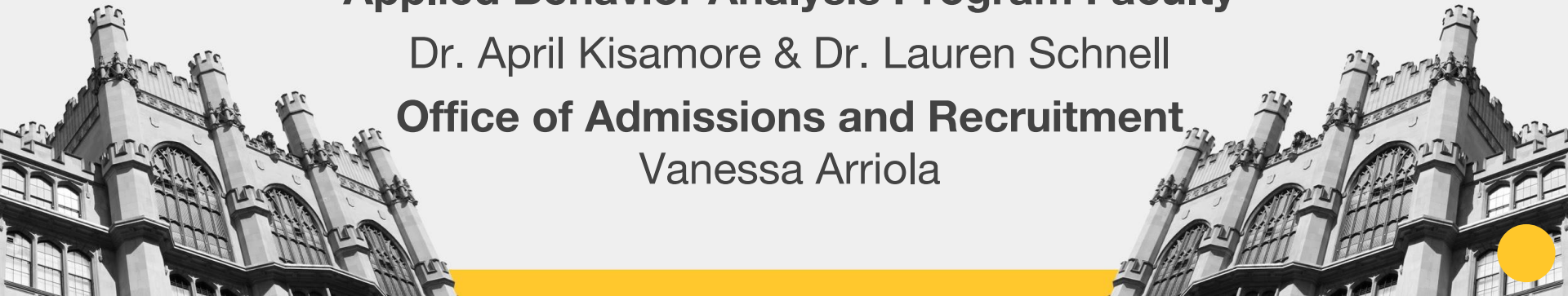
Graduate Programs and the Application Process

Applied Behavior Analysis Program Faculty

Dr. April Kisamore & Dr. Lauren Schnell

Office of Admissions and Recruitment

Vanessa Arriola



Welcome

1. All participants video is disabled to protect your privacy
2. All participants are muted. You can unmute during Q&A time
3. Questions can also be typed in to the Zoom Group Chat during the presentation but will be answered during Q&A



Session Goals

1. What ABA programs are available at Hunter?
2. Which program is right for me?
3. What are the certification and/or licensure options for Behavior Analysts?
4. How do I apply?



What is Applied Behavior Analysis?

Applied Behavior Analysis (ABA) involves the application of principles of behavior to improve socially significant behaviors.

Graduates of our program apply behavior analytic interventions to individuals from infancy through adulthood in settings that include schools, homes, day programs, communities, residential care settings, businesses, and research laboratories.



Graduate Programs in ABA

Master's of Science in Applied Behavior Analysis
for those with either a bachelor's or master's degree

Advanced Certificate in Applied Behavior Analysis
for those with a prior master's in Education,
Psychology, or Behavior Analysis

Program Fast Facts

- ★ Full-time or part-time study
- ★ Afternoon, evening, and summer courses available
- ★ Hybrid coursework (80% online)

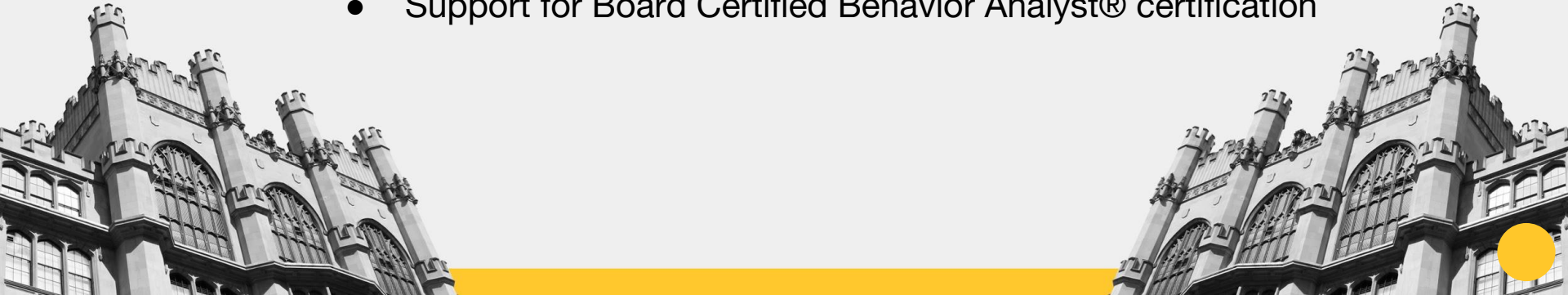
Master's Degree in Applied Behavior Analysis

- A 41-credit full-time program completed in two years
- Online cohort model with opportunities for in-person instruction
- Practicum placement support is provided for the 300-hour, 2-semester practicum course
- Coursework is approved by the New York State licensing board and the Behavior Analysis Certification Board®
- Support for Board Certified Behavior Analyst (BCBA)® certification and NY state licensure (LBA)



Post Master's Advanced Certificate in Applied Behavior Analysis

- A part-time, 18-credit program completed in 18 months
- Online cohort model with opportunities for in-person instruction
- Coursework is approved by the Behavior Analyst Certification Board®
- Support for Board Certified Behavior Analyst® certification



Certification and Licensure

There are two credentials behavior analysts possess in New York State:

- 1. Licensed Behavior Analyst (LBA)**
- 2. Board Certified Behavior Analyst (BCBA®)**



Licensed Behavior Analyst (LBA)

A New York state-specific licensure for behavior analysts.

- Completion of necessary coursework as specified by the NY state licensing board
- Completion of 1,500 hours of professional fieldwork experience working with individuals diagnosed with ASD who have a prescription for ABA, supervised by a qualified licensed professional
 - Fieldwork can take place as part of a required coursework or following provision of a limited license
- Conducts ABA interventions only with those diagnosed with ASD
- Required to provide ABA services *outside exempt settings*, such as K-12 schools and colleges in the state of NY

<http://www.op.nysed.gov/prof/aba/>

Board Certified Behavior Analyst (BCBA)

A nationally recognized certification for behavior analysts overseen by the Behavior Analyst Certification Board (BACB)®

- Completion of necessary coursework as determined by the BACB
- Completion of 1,500 hours of independent fieldwork experience doing ABA activities, supervised by a qualified BCBA
 - Fieldwork can take place as soon as coursework begins
- Required to provide ABA services in *exempt settings*, such as K-12 schools and colleges in the state of NY
- A broad and covers any populations; it is not specific to working with any particular population, or in any particular state

<https://www.bacb.com/bcba/>

Admission Requirements & Eligibility: Your Applicant Profile

1. Academic Background & Grade Point Average
2. Writing and Communication Skills
3. Research Capability (Master's degree)
4. Previous experience (Work/Volunteer)



How do I Apply?

- Statement of Purpose
- Unofficial Transcripts
- Resume
- Two Letters of Recommendation
- GRE Scores - Recommended
- Supplemental Materials
- TOEFL Scores
- Application Fee - \$125
- Online Graduate Application

When do I Apply?

Spring 2019

October 15th

Fall 2019

March 15th

Financing Your Degree

Tuition and Fees

- In-state: \$455 per credit
- Out-of-state: \$830 per credit

Fees based on enrollment status

Academic Excellence Fee \$50 per credit

Financial Aid

Federal Aid: Loans and work-study, if eligible

Advanced Certificate students are not eligible for federal aid

Scholarships & Opportunities

School of Education new student awards



Questions & Contact Information

ABA Program Faculty

abainfo@hunter.cuny.edu

School of Ed Admissions Office

edadmissions@hunter.cuny.edu

[**education.hunter.cuny.edu**](http://education.hunter.cuny.edu)

